



STEELHIGHSEN
海晟国际



STEEL PRODUCTS BROCHURE

HONOR STEEL NEAR CUSTOMER

Tianjin Highsen Trading Co., Ltd.



About us

Our company was founded in Tianjin in 2021 by a group of entrepreneurs and professionals with 10 years of international experience in the steel industry. We trade steel worldwide and provide high quality materials for our customers in various markets. With our in-depth market analysis and the extensive network, we are reliable partner for manufacturers and service centers.

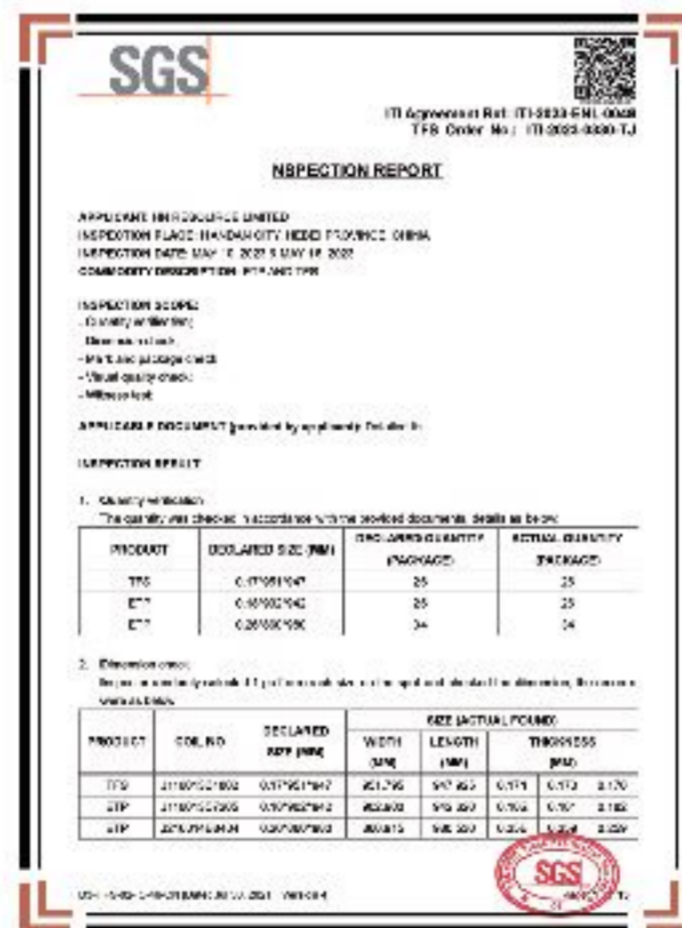
Since the market needs becomes more and more sophisticated, except qualified products, reasonable price and on-time delivery, we also expand our our horizon to provide quality control and tailored materials services on which our customers can benefit from. Through our expertise, along with our strategic warehouse location in close proximity to the port of Tianjin, our export solutions and distribution are cost-effective and convenient for both domestic and international clients.

In order to provide more convenient trade service, we established HN Resource Limited as our trade window in Hong Kong.

Certification



• ISO Certificate



• SGS Report



• QC Report



• QC Report

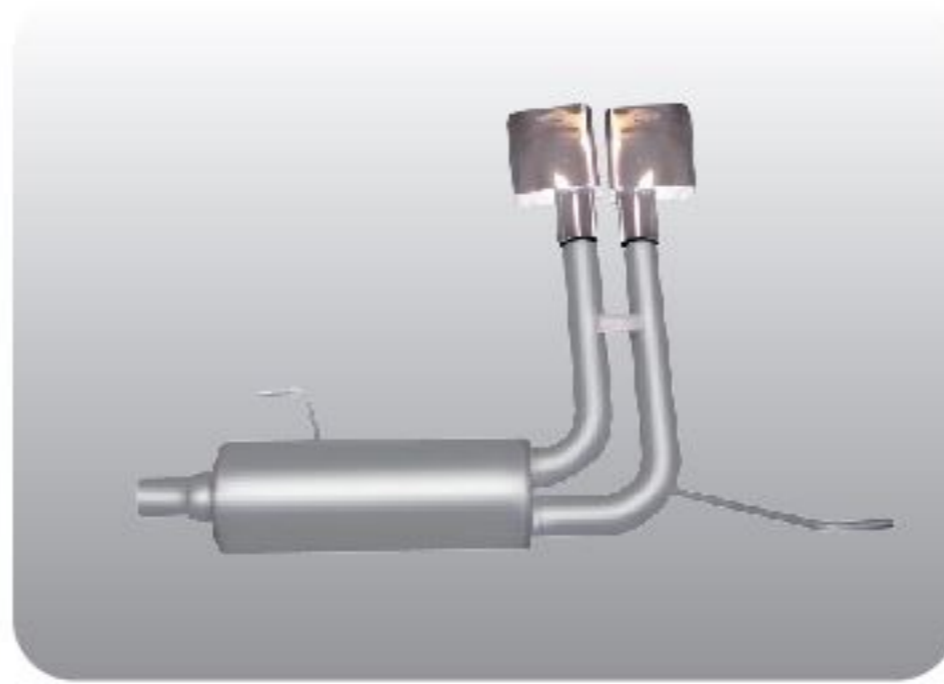


Product Introduction

Aluminized

▶ Aluminized Steel (Alusi/ Hot Dipped Aluminium Coated Steel)

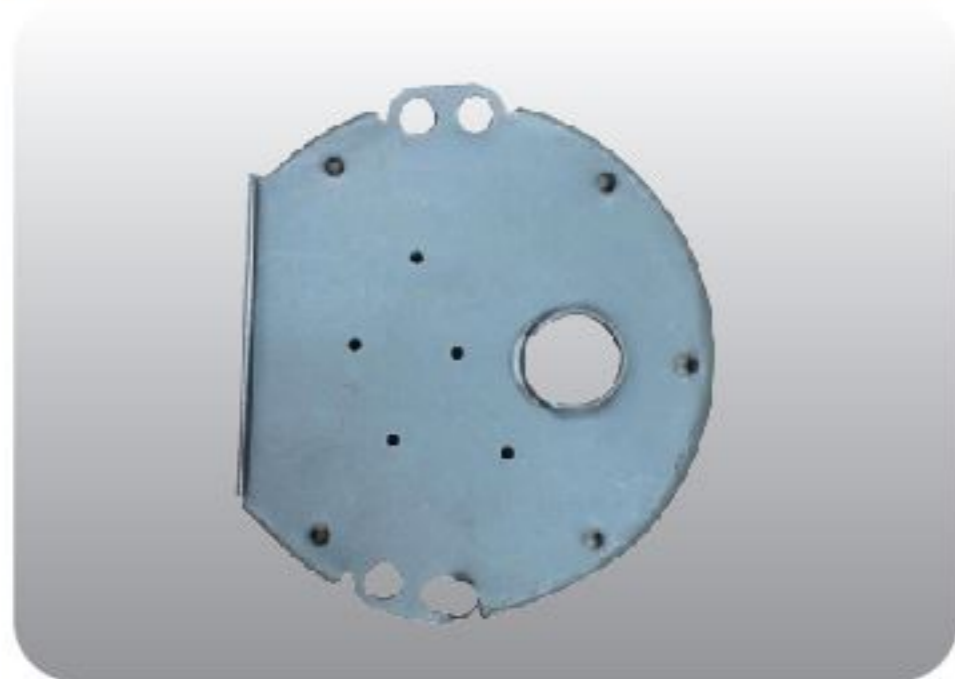
Specification	Size	0.30 - 3.0mm (Thickness) x 900 - 1600mm (Width)
	Coating	AS80, AS100, AS120, AS150, A180, AS200, AS300
Grade	EN 10346	DX51D, DX52D, DX53D, DX54D, DX55D, DX56D, DX57D
	JIS G3314	SA1C, SA1D, SA1E, SA1F, SAC31, SAC35, SAC41, SAC45
	ASTMA463	CS Type A, CS Type B, CS Type C, FS, DDS, EDDS
Application		Aluminized Steel mainly applied in heat resistant places. 1) Automotive: exhausting system and engine heat shield. 2) Home appliance: microwave oven, stoven, cake pan, cooker, water heater.



EGI

▶ EGI (Electrolytic Galvanized Steel)

Specification	Size	0.30 - 2.5mm (Thickness) x 900 - 1800mm (Width); Coating: E10/10 - E70/70
	Post-treatment	Anti-fingerprint (AFP), Phosphated, Oiled
Grade	EN 10271	DC01, DC03, DC04, DC05, DC06
	JIS G3313	SECC, SECD, SECE, SECF, SECG
	Automotive grade	HY180Y, HY220Y, HY260Y
Application		1) Automotive: oil tank, car body-side sheet, spare tire compartment. 2) Home appliance: OA facilities (copier, printer, fax machine), liquid crystal monilayer, enclosures for DVD, set top box. 3) Industrial usage: oil filter, electric cabinet shell, communication equipment, navigation instruments.

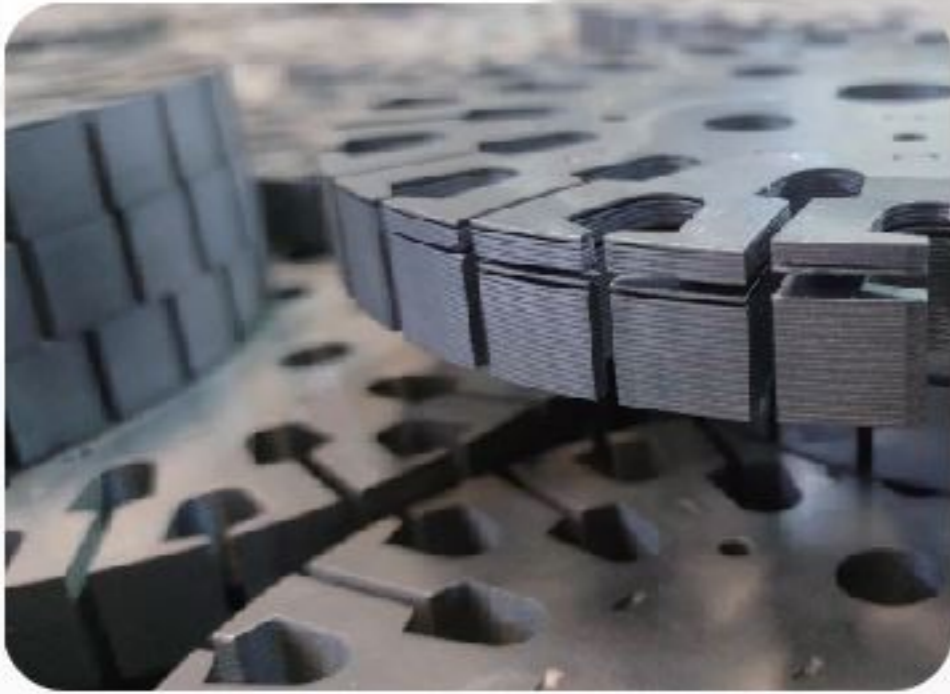




Electrical Steel (CRNGO)

► Cold Rolled Non-Graine Oriented Steel (CRNGO)

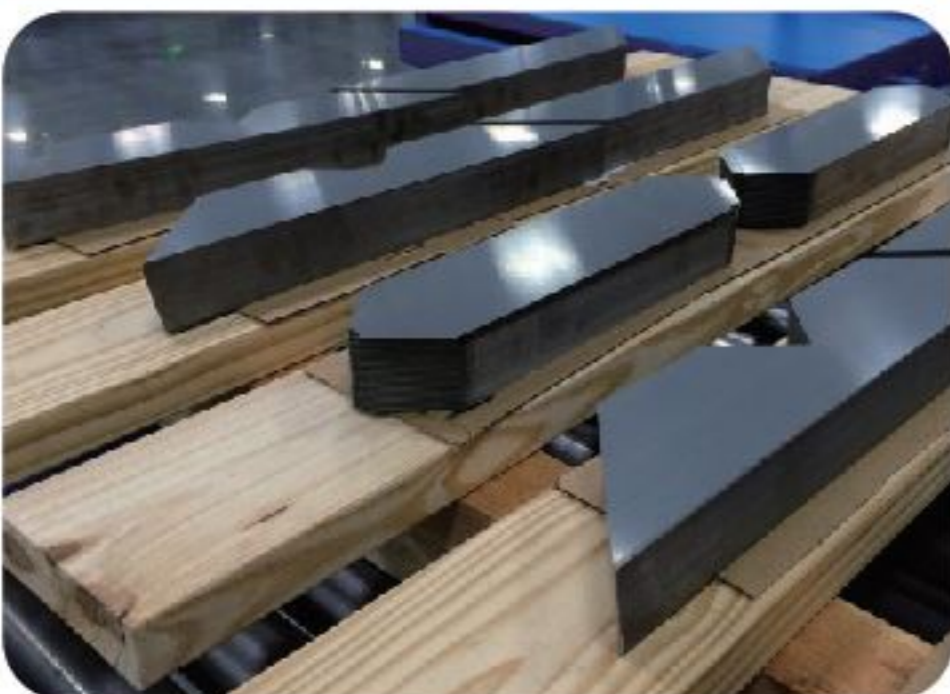
Grade	0.20mm	20WTGH1300, 20WTGH1500, 20WTG1300, 20WTG1500
	0.27mm	27WGPH1500, 27WGPH1800, 27WGP1400, 27WGP1500
	0.30mm	30WGPH1500, 30WGPH1800, 30WGP1500, 30WGP1600, 30WGP1700, 30WGP1800
	0.35mm	35W230, 35W250, 35W270, 35W300, 35W360, 35W440, 35WGPH1700 35WGPH1900, 35WGP1700, 35WGP1800, 35WGP1900, 35WGP2100
	0.50mm	50W250, 50W270, 50W290, 50W310, 50W350 50W400, 50W470, 50W600, 50W800, 50W1300
Application		NGO is widely used to making motor.



Electrical Steel (CRGO)

► Cold Rolled Graine Oriented Steel (CRGO)

Grade	0.18mm	18R065, 18R070, 18P080
	0.20mm	20R065, 20R070, 20R075, 20P085
	0.23mm	23R075, 23R080, 23R085, 23R090; 23P085, 23P090, 23P095, 23P100
	0.27mm	27R080, 27R085, 27R090, 27R095; 27P090, 27P095, 27P100, 27P105 27QG100-H, 27QG120-H, 27R085-LM, 27R095-LM
	0.30mm	30R090, 30R095, 30R100, 30R105; 30P095, 30P100, 30P105, 30P120 30QG105-H, 30QG120-H, 30P100-LM, 30P105-LM, 30P120-LM 30G120, 30G130
Application		GO mostly used to produce transformer.



Cold Rolled Steel

► CRFH (Cold Rolled Steel Coil Full Hard)

Size	0.10 - 3.0mm (Thickness) x 600 - 1500mm (Width)
Grade	JIS G3141 SPCC-1B, SPCC-1D
Application	1) Base metal for CRC, galvanized and galvalume. 2) To make furniture pipe, greenhouse pipe, steel strapping.

► CRC Black Annealed (Black CRC)

Size	0.30 - 1.5mm (Thickness) x 1000 - 1250mm (Width); Grade: Q195/ SPCC
Application	Pipe, door, furniture, construction etc.



► CRC (Cold Rolled Steel Coil)

Grade	Size	0.14 - 3.0mm (Thickness) x 600 - 1850mm (Width)
	Commercial grade	1) EN 10130: DC01, DC03, DC04, DC05, DC06 2) JIS G3141: SPCC, SPCD, SPCE, SPCEN 3) SAE standard: SAE1006, SAE1008, SAE1010 4) DIN1623: St 12, St13, St14, St15
	Enameling grade	EN 10209: DC01EK, DC04EK, DC06EK; DC01ED, DC04ED, DC06ED
	Automotive grade	1) B170P, B210P, B250P, B180P2, B220P2, B260P2 2) 140BH, 180BH, 220BH, 260BH, 300BH2 HC260/ 300/ 340/ 380/ 420/ 460/ 500LA 3) DP390/ 440/ 590/ 780; TR590/ 690/ 780; PHS1500/ 1800/ 2000
	Medium carbon	St37, St44, St52; S50C, SK85, 65Mn, SAE1065



Coated Steel

► Galvanized Steel (HDG/ GI)

Galvanized Steel	Size	0.10-6.0mm (Thickness) x 600-1800mm (Width)
	Coating	Z30-Z600, Regular Spangle, Zero Spangle, Minimized Spangle
	Post-treatment	Chromated, Oiled, Anti-fingerprint (AFP)
	Galvannealed (GA)	Mostly used for automotive industry
	Embossed galvanized steel	Mostly used for home appliance
Grade		DX51D, DX52D, DX53D, DX54D, DX56D, DX57D
		S220GD, S250GD, S280GD, S320GD, S350GD, S450GD, S550GD
		HC220PD, HC180PD, HC220YD
		HC180BD, HC220BD
		HC260LAD, HC300LAD, HC340LAD, HC380LAD
		HC340/ 590DPD
Application		<p>1) Automotive: car body, car body-side sheet, spare tire compartment.</p> <p>2) Home appliance: fridge, washing machine, PC case box etc.</p> <p>3) Construction: pipe, howllow section, floordeck, purlin, roofing, PPGI base metal and solar panel support system etc.</p>

► Zinc-Aluminium-Magnesium alloy coated steel (ZAM)

ZAM	Size	0.35 - 6.0mm (Thickness) x 600 - 1600mm (Width)
	Coating	ZM30 - ZM600, Regular Spangle, Zero Spangle
	Post-treatment	Chromated, Oiled, Anti-fingerprint (AFP)
	Coating content	<p>Low Al & Mg: Zn-(0.5-3%)Al-(0.4-2%)Mg</p> <p>Mid Al & Mg: Zn-(3-13%)Al-(2-4%)Mg</p> <p>High Al & Mid Mg: Zn-(50-60%)Al-(2-4%)Mg</p>
Application		Pipe, howllow section, floordeck, purlin, roofing, PPGI base metal and solar panel support system etc.



► **Aluzinc Steel (Galvalume/ GL)**

Size range		0.10 - 2.5mm (Thickness) x 750 - 1500mm (Width); Coating: AZ30 - AZ185
Post-treatment		Anti-fingerprint (AFP), Chromated, Oiled
Grade	EN 10346	DX51D, DX52D, DX53D, DX54D; S220GD, S250GD, S280GD, S320GD, S350GD, S550GD
	ASTM A792M	CS Type A, CS Type B, CS Type C, FS; Gr.33, Gr.37, Gr.40, Gr.50, Gr.60, Gr.70, Gr.80



► **Prepainted Steel Coil (PPGI/ PPGL/ OC)**

Prepainted	Size	0.10 - 2.0mm (Thickness) x 600 - 1500mm (Width)
	Coating	Z20-Z275 (PPGI), AZ30 - AZ185(PPGL), ZM30 - ZM600 (PPAM)
	Substrate	GI Base (PPGI), GL Base (PPGL), CR Base (PPCR), ZAM Base (PPAM), Stainless
	Paint	Top: 4+8mic/ 5+10mic/ 5+15mic/ 5+20mic Back: 5-7mic primer only or 5+10mic/ 5+15mic/ 5+20mic Paint Type: Epoxy, Polyester (PE), SMP, HDP, PVDF Color: RAL color or follow customer's sample
Others		Coil ID: 508mm, Coil weight: 3-10MT
Grade		Follow base metal grade
Application		1) Construction: sandwich panel, wall, roofing etc. 2) Home appliance: fridge, washing machine etc.
Remark		Coil, slit strip, cut to sheet and corrugated sheet available.





Hot Rolled Flat Steel

► Hot Rolled Coil (HRC)

Specification		0.85 - 25.4mm (Thickness) x 800 - 2000mm (Width)
Grade	Rerolling	SPHC/ SAE1006/ SAE1008/ SAE1010/ SAE1012
	Pipe making	SS400/ Q235B/ Q355B/ S235JR/ S355JR/ Gr.50, SPHT1-T4
Application	Automotive	Truck frame, truck chasis, wheel, truck floor.
	Industrial	Rerolling into CRFH, base metal for galvanized, gas cylinder, bridge, heavy machinery.
	Construction	Pipe, steel structure, cut to sheet.

► Hot Rolled Strip (HR Strip)

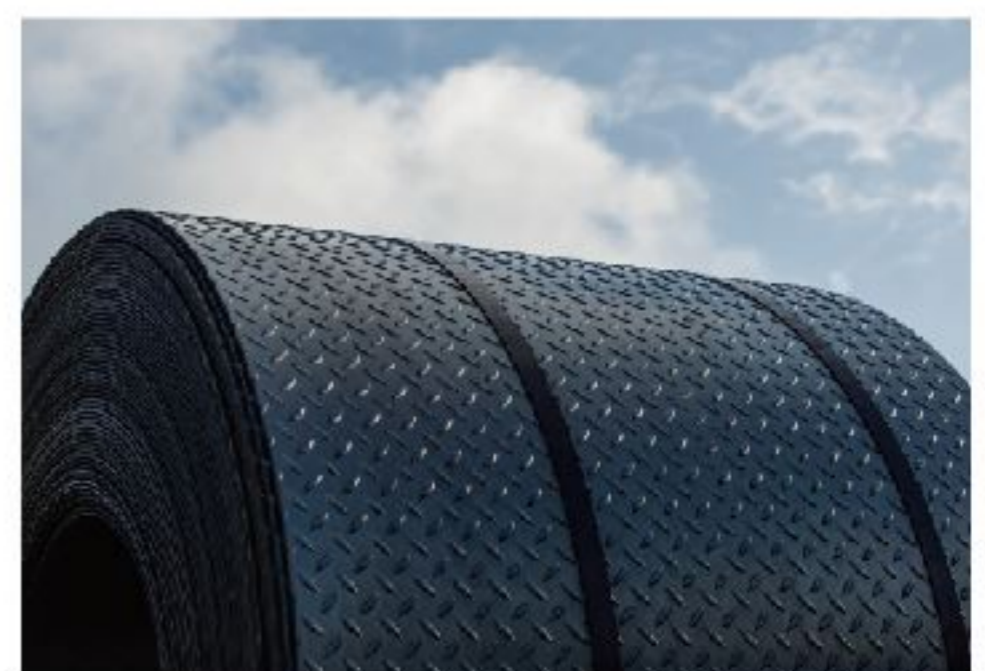
Specification	2.0 - 4.5mm (Thickness) x 355 - 860mm (Width)
Grade	Q195/ Q195L
Application	Raw material for cold rolled strip, pipe making etc.

► Hot Rolled Chequered Plate (Checkered/ Chequered/ Teardrop)

Specification	1.2 - 16mm (Thickness) x 1000 - 2,000mm (Width)
Grade	Q235B/ SS400
Application	Parking flooring, elevator flooring, industrial stairs, door kick plate.

► Hot Rolled Pickled and Oiled Coil (HRPO)

Specification	1.50 - 6.0mm (Thickness) x 700 - 1650mm (Width)
Grade	1) Cold forming grade: SPHC, SPHD, SPHE, DD11, DD12, DD13
	2) Automotive grade: SAPH310, SAPH370, SAPH400, SAPH400, SAPH440 QstE340TM, QstE380TM, QstE420TM, QstE460, QstE500
Application	Truck frame, wheel, chasis, truck floor, automotive spare parts.

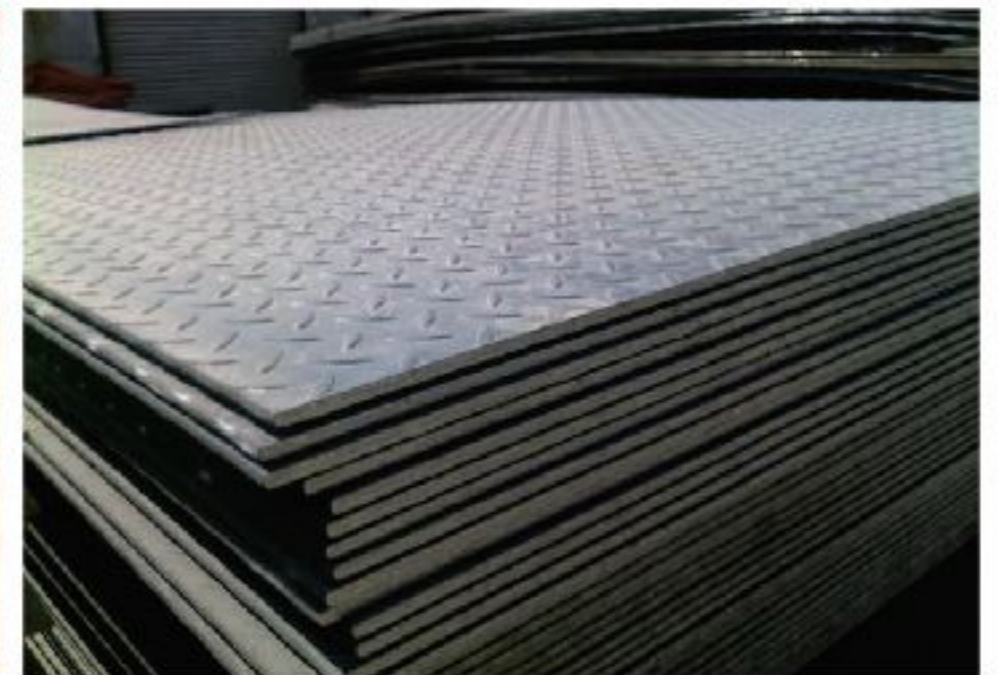
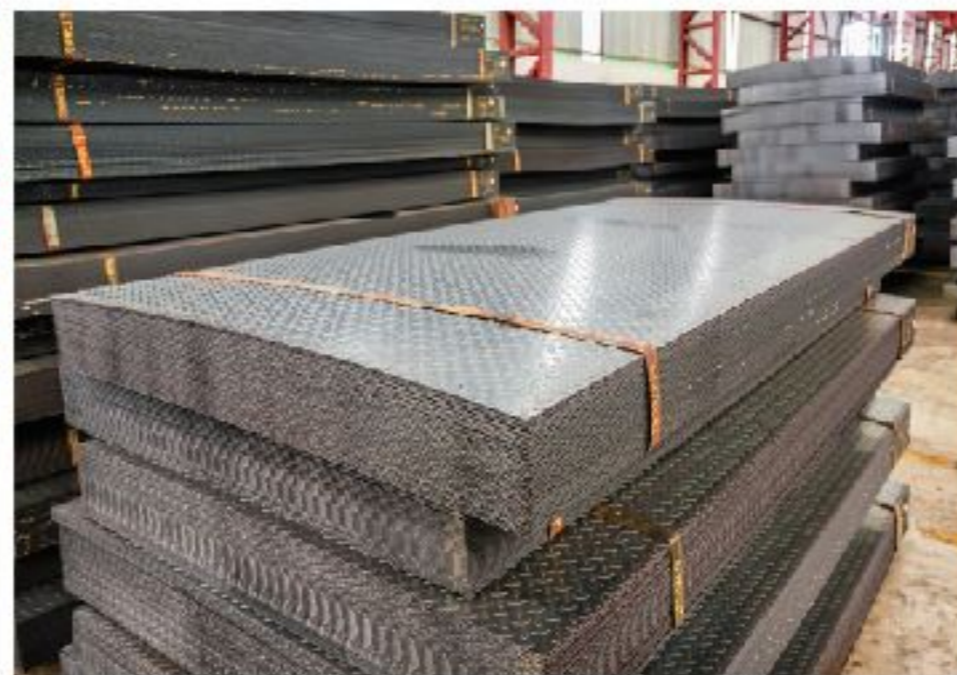
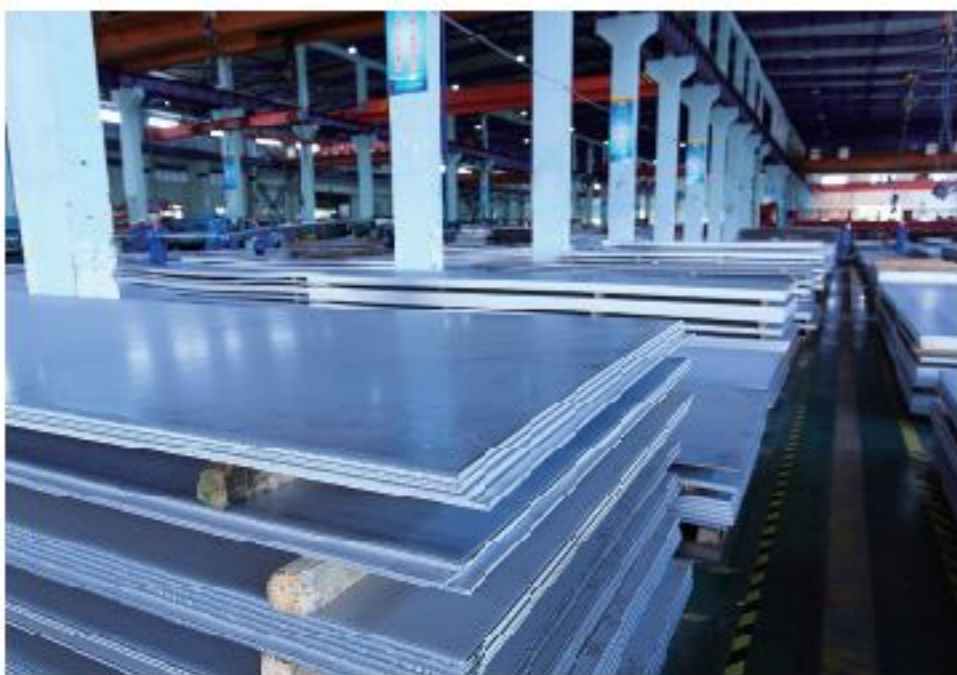


► Hot Rolled Sheet (HRS)

Specification	1.0 - 20.0mm (Thickness) x 1200 - 2000mm (Width) x 2,000 - 12,000mm (Length)
Grade	SPHC, SS400, Q235B, Q355B, S235JR, S355JR, ASTM A572 Gr.50
Application	Pipe, steel structure, pressure vessel, boiler, bridge, heavy machinery.

► Hot Rolled Plate (HRP)

Specification	6 - 350mm (Thickness) x 900 - 5,000mm (Width) x 3,000 - 25,000mm (Length)	
Grade	Commercial grade	A36, SS400, Q235B, Q355B, S235/275/355-JR/J0/J2, ASTM A572 Gr.50
	Container grade	Q245R, Q345R, Q370R, Q420R, SA516Gr.60 (R-HIC), SA516Gr.70(R-HIC)
	EN10025-6: 2004	S500Q, S500QL, S500QL1, S550Q, S550QL, S550QL1, S690Q, S690QL, S690QL1, S890Q, S890QL, S960Q, S960QL
	JIS G3106-2015	SM490, SM520, SM570
	JIS G4051: 2005	S35C, S45C, S50C, S55C
	API 5L	Gr.A, Gr.B, X42, X46, X52, X56, X60, X70, X80
Delivery condition	AR, CR, N, N+T, Q+T, TMCP	
Application	Pipe, steel structure, pressure vessel, boiler, bridge, heavy machinery.	





Hot Rolled Long Steel

► Hot Rolled Steel Sheet Pile

Size	U shape	400mm x 100mm x 10.5mm (Type 2) 400mm x 125mm x 13.0mm (Type 3) 400mm x 150mm x 13.1mm (Type 3A)
	Z shape	ZZ12-770, ZZ13-770, ZZ14-770, Z17-700, ZZ18-700, ZZ19-700, ZZ20-700, ZZ24-700, ZZ26-700, ZZ28-700, ZZ36-700, ZZ40-700, ZZ42-700, ZZ46-700, ZZ48-700, ZZ50-700, ZZ52-700
Grade	JIS A5528	SY295, SY390
	EN10248-2	S240GP, S270GP, S320GP, S355GP, S390GP, S430GP, S460AP
Application		Cofferdam and project.

► Hot Rolled Section Steel (Section Steel)

Specification	H beam	H150 x 75 - H900 x 300 W6/ W8/ W10/ W12/ W14/ W16/ W18/ W21/ W24
	Channel	(50-400)mm x (25-104)mm x (4.5-14.5)mm
	Angle	(20-400) x (20-250) x (2-35)mm
Grade	JIS G3101	SS400, SS540
	EN10025	S235JR, S355JR
	GB/T 11236	Q235B, Q355B, Q355C
	ASTM A572	Gr.50, Gr.60
Application		Construction and project.



► Hot Rolled Wire Rod In Coil (WR)

Specification		Dia 5.5-42mm
Grade	ASTM A510	SAE1006 - SAE1080
	JIS G3506	SWRH42A -82A, SWRH42B - 82B
	JIS G4053	SWRCH6A - 22A, SWRCH25K - 45K
Application		Wire mesh, nail, galvanizing wire, bolts & nuts, PC strand etc.

► Hot Rolled Deformed Steel Bar (Debar/ Rebar)

Specification		Dia 10-50mm
Grade	GB/T 1499.2	HRB400, HRB400E, HRB500, HRB500E, HRB400+V, HRB500+V
	BS4449: 2005	460B, B500B
	KS D3524	2016: SD400, SD500, SD600
	JIS G3112	SD345, SD390, SD490
	JS33: 2005	Gr300, Gr.400
Application		Construction and project.

► Hot Rolled Steel Round Bar

Specification		Dia 20-350mm
Grade	JIG G3507	SWRCH8A - 22A
	JIS G4051	S15C - S58C
	JIS G4052	S15C - S58C
	JIS G4053	SCM415 - 440, SNCM220
	JIS G4804	SUM23, SUM24L
	JIS G3101	SS330 - SS540
	JIS G3106	SM400A, SM490A
Application		Bolts & nuts, machinery components.



Semi Products

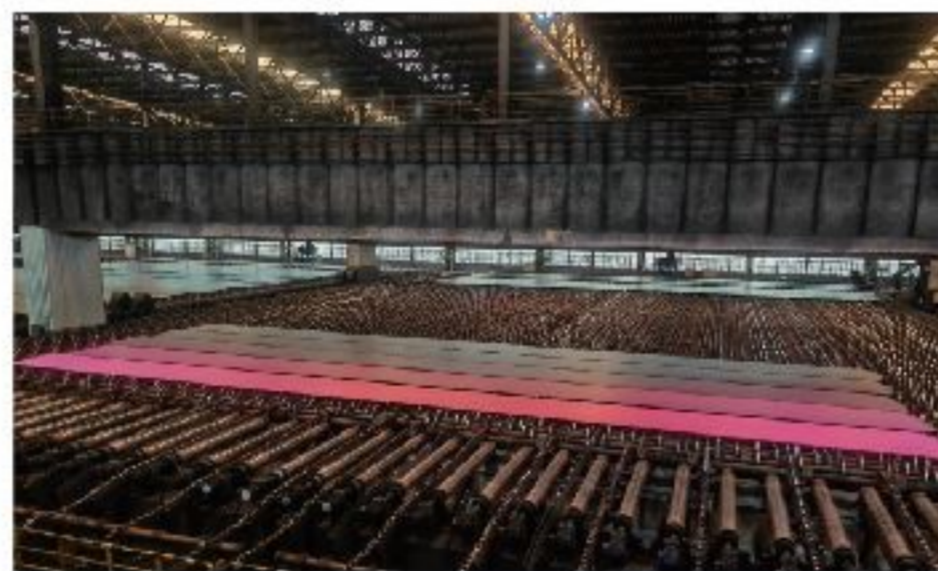
► Billet (Hot Rolled Steel Billet)

Size	Square billet	100 x 100; 120 x 120; 130 x 130; 150 x 150; 165 x 165 180 x 180; 200 x 200; 220 x 220; 230 x 230; 240 x 240
	Rectangular billet (bloom)	165 x 225; 165 x 280, 230 x 350, 320 x 350, 320 x 410, 360 x 450
	Round billet	Dia 45 - 360mm x length 12,000mm Max
Grade	Common grade	3SP, 4SP, 5SP; Q195, Q215, Q235B, Q355B, 30MnSi, HRB400, HRB500 SAE1006/ 1008/ 1010/ 1012;SS400/ SS540
	Special grade	Follow customer's chemical composition/ TDC.
Application		Billet used to produce rebar, wire rod, sections (H beam, angle, channel), HR strip etc.



► Slab (Hot Rolled Steel Slab)

Size	For HRC usage	Thickness (150-250mm) x Width (1,000 - 2,000mm) x Length 12,000mm Max
	For HRP usage	Thickness (150-310mm) x Width (1,800 - 4,100mm) x Length 15,000mm Max
Grade	Common grade	SPHC, SAE1006, S235JR, S355JR, SS400, Q235B, Q355B
	Special grade	Follow customer's chemical composition/ TDC
Application		Slab used to produce HRC and HRP.





Loading Photos

► Containter shipment



► Bulk shipment





Tel: 0086 22 6565 7971



Mob: 0086 155 1008 0821



Email: info@steelhighsen.com



Website: www.steelhighsen.com



Address: Room 805, Unit 1, Building 6, Ronghe Plaza, Airport Economic Area, Tianjin, China